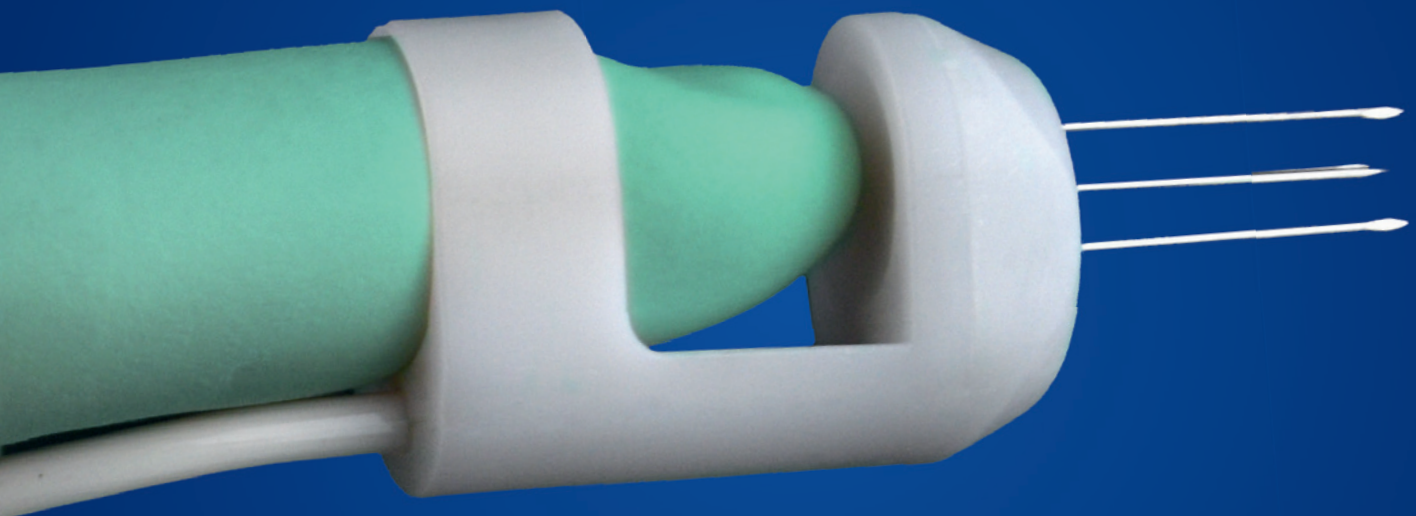


Precision electroporation  
at your fingertip



**FINGER ELECTRODE**  
2nd generation

# NEW FINGER ELECTRODES (NFD Series) for CLINIPORATOR™

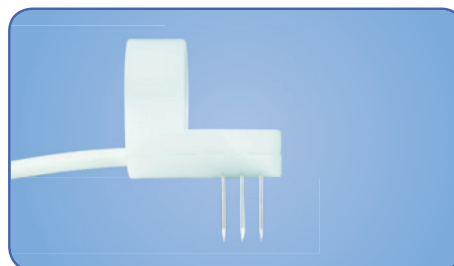
Developed according to the specific indications of the users of CLINIPORATOR™, the new Finger electrodes (NFD series) expand the electroporation volume improving the efficacy of the previous configurations.

Thanks to the reduced size, the new wearable Finger electrodes (NFD series) allow for:

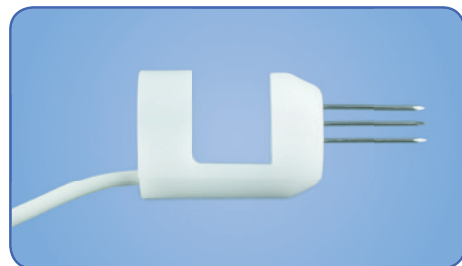
- Treatment of cutaneous sites and anatomical cavities which are of small size and difficult to access
- Simple and effective positioning and penetration
- Maximum tactile sensitivity and spatial perception during treatment



*Longitudinal needles, protruding from the phalanx, length 10 or 20 mm*

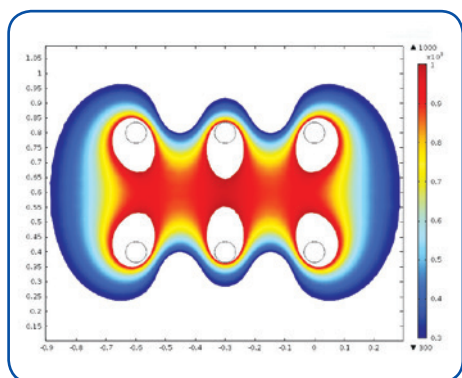


*Orthogonal needles, below the fingertip, length 15 mm*



## Suitable for treatment with local anaesthesia

- Reduced number of needles
- Low voltage applied
- High frequency of delivery
- Limited electroporated volume



## Technical specifications and distribution of the electric field

- Longitudinal or orthogonal needles
- 3 x 2 needle matrix: 4 mm distance between the rows of needles
- Needle length: 10 to 20 mm with trocar tip
- Flexible ring: adaptable to fingers of different size
- Series of 8 electrical pulses of 400 V amplitude applied at a frequency of 5 kHz
- Fully disposable
- Ready to use

CODE	REF.	DESCRIPTION
IG0E370	F-10-NL	Finger configuration (F), active part 10 mm (10), needle electrode (N, needle), longitudinal orientation (L), 4 mm distance between the rows of needles (3 pairs)
IG0E380	F-20-NL	Finger configuration (F), active part 20 mm (20), needle electrode (N, needle), longitudinal orientation (L), 4 mm distance between the rows of needles (3 pairs)
IG0E375	F-15-NO	Finger configuration (F), active part 15 mm (15), needle electrode (N, needle), orthogonal orientation (O), 4 mm distance between the rows of needles (3 pairs)

Series NFD electrodes (Finger) are compatible only with Cliniporator™ devices (models EPS02 and VGP02), manufactured exclusively by IGEA S.p.A.